

Address:Hesan industrial area, Dong'ou
District, Wenzhou, Zhejiang,China
Tel: +86-577-57670925
Fax:+86-577-57755505
Email: info@zzcontrols.com
Website:www.zzcontrols.com



CLP Power Plant 2 × 660MW New Project Circulating water system

Place: Guizhou, China

Date: 2016

Products:

#Accumulator type hydraulic butterfly valve DN2400

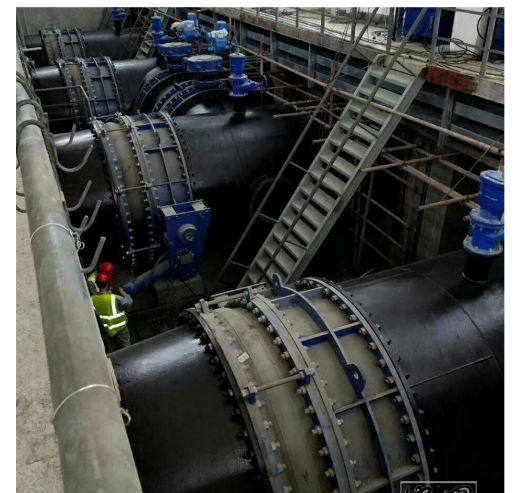
#20pcs of DN2200 Electric butterfly valve D941X-6C

#2 pcs of DN900 electric butterfly valve

#16 pcs of DN400 electric butterfly valve

Project description:

Power plant planning and construction of 4 × 660MW supercritical coal - fired units. The current construction scale of 2 × 660MW supercritical coal-fired units, simultaneous construction of flue gas desulfurization, denitrification device.



Address:Hesan industrial area, Dong'ou
District, Wenzhou, Zhejiang,China
Tel: +86-577-57670925
Fax:+86-577-57755505
Email: info@zzcontrols.com
Website:www.zzcontrols.com



CLP Power Plant 2 × 660MW New Project Circulating water system

Induction and Exhaust Steam Turbine
Condenser Recirculating Cooling Water
The inlet and outlet pipes are equipped
with a motor butterfly valve. Each unit is
equipped with two draft fan turbines.
Each fan is installed with four electric
butterfly valves. Each unit has 8 electric
butterfly valves. Two draft fan steam
turbine condenser cooling water main
installation of an electric control
butterfly valve.

